



stonefield query

Get the most
from your

GoldMine[®] and HEAT[®]

systems in

1.2.3.4.5 easy steps



Save Date	Activity Description	User	Product	Units	Price	Amount
Company: ADI Inc.						
06/27/2000	Seminar	BILL	G05- Gadget E	80	\$2.75	\$220
06/29/2000	Radio Spot	RAY	PWG- Gadget Package	9	\$95.00	\$855
Totals for ADI Inc.:						\$1,075
Company: AFPM, Inc.						
06/29/2000	Seminar	BILL	W01- Widget A	150	\$1.15	\$172.50



Winner of the
2002 FrontRange Integration Award
2000 Developer's Choice Award

The Stonefield Query Advantage

Unlike generic report writers, Stonefield Query has been customized and optimized for GoldMine and HEAT.

Ease of Use

You don't have to tell Stonefield Query how to get the data; you simply tell it what you want, and it'll figure out how to get it.

All fields (even user-defined fields) appear with the caption you've assigned (global or local label) rather than the field name or 'User-Defined 2'.

Productivity

With a generic report writer you are responsible for laying out fields, adjusting sizes and headings manually. Stonefield Query automatically creates fields and headings, places them in the right spot, and sizes them appropriately. You can create a report in Stonefield Query in just seconds with only a few mouse clicks! Grouping, sorting, and totaling fields is as simple as selecting the desired option from a list.

Performance

Stonefield Query uses SQL SELECT statements to retrieve records from the database, so only those records that match the filter are accessed. This can have an enormous impact on the performance of the query. For example, one Stonefield Query user told us that a report they created in GoldMine takes over 25 minutes to run but the same report in Stonefield Query takes just 15 seconds! That's 100 times faster!

Stonefield Query™ is a powerful end-user report writer that streamlines and simplifies the process of analyzing and reporting your GoldMine and HEAT data.

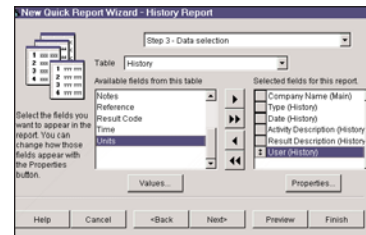
Stonefield Query is designed to make it easy for you to create your own reports in just minutes. With its user-friendly design, Stonefield Query makes report creation a snap for users of all skill levels. Stonefield Query uses a simple wizard interface, taking you through five easy steps to create a report. The built-in Advanced Report Designer allows you to move fields, add lines, add boxes and shading, include graphics such as company logos, define calculated fields and more. This feature is ideal for businesses with a need for presentation-quality reports. After you have created your report, you can direct it to a printer, Excel, Word, HTML, screen preview or other output. Stonefield Query does the rest!



DESIGNED FOR
GoldMine
Sales and Marketing.

DESIGNED FOR
HEAT
Version 6.0

DESIGNED FOR
GoldMine
Business Contact Manager



Easier and More Flexible Filtering

Simply select the field to filter on, choose how to compare it to a value from a list of English operators (“equals”, “does not equal”, “contains”, “is greater than”, etc.), and enter a value or choose it from a list of the distinct values for that field (you can even choose dates from a pop-down calendar).

Create filters that prompt you for a value each time you run a report such as a desired date range for an activity report.

Links With Other Add-On Products

Stonefield Query can integrate with other GoldMine add-on products. For example, if you use Details Plus from Solica Consulting, Stonefield Query will automatically display the proper headings and data you’ve entered for extended detail types. If you use QuoteWerks from Aspire Technologies, you can create reports in Stonefield Query that include information from both GoldMine contacts and QuoteWerks quotes.

For a
FREE
trial version visit
www.stonefieldquery.com

To order, call
1-800-563-1119
or contact your local
HEAT/GoldMine dealer.

What do others have to say about Stonefield Query?

“We often advise our clients on how to create labels for their card lists. We encountered a problem, however, when attempting to print labels for primary and additional contacts based on merge codes. After two days of frustration and failed attempts in GoldMine and Crystal, we turned to Stonefield Query and had the labels we wanted in less than five minutes.”

Beth Dickinson
David Yarger Consulting

“The best contact manager has become even better! I now have a simple method for extracting information from GoldMine that used to be difficult, if not impossible to obtain. Stonefield Query has made GoldMine an infinitely more productive tool for me, and has enabled me to increase my income and provide a better service to my clients. I think Stonefield has a killer product that is an absolute essential to anyone using GoldMine.”

Stan Green CFP, RFP
TransAmerica

“This product is by far the best reporting package for GoldMine that I have evaluated. Your technical support is second to none and weighed heavily in my purchase decision. I didn’t believe that it would ever be this easy to produce all of my reporting needs from a single program.”

Anita Carter
Addison Whitney